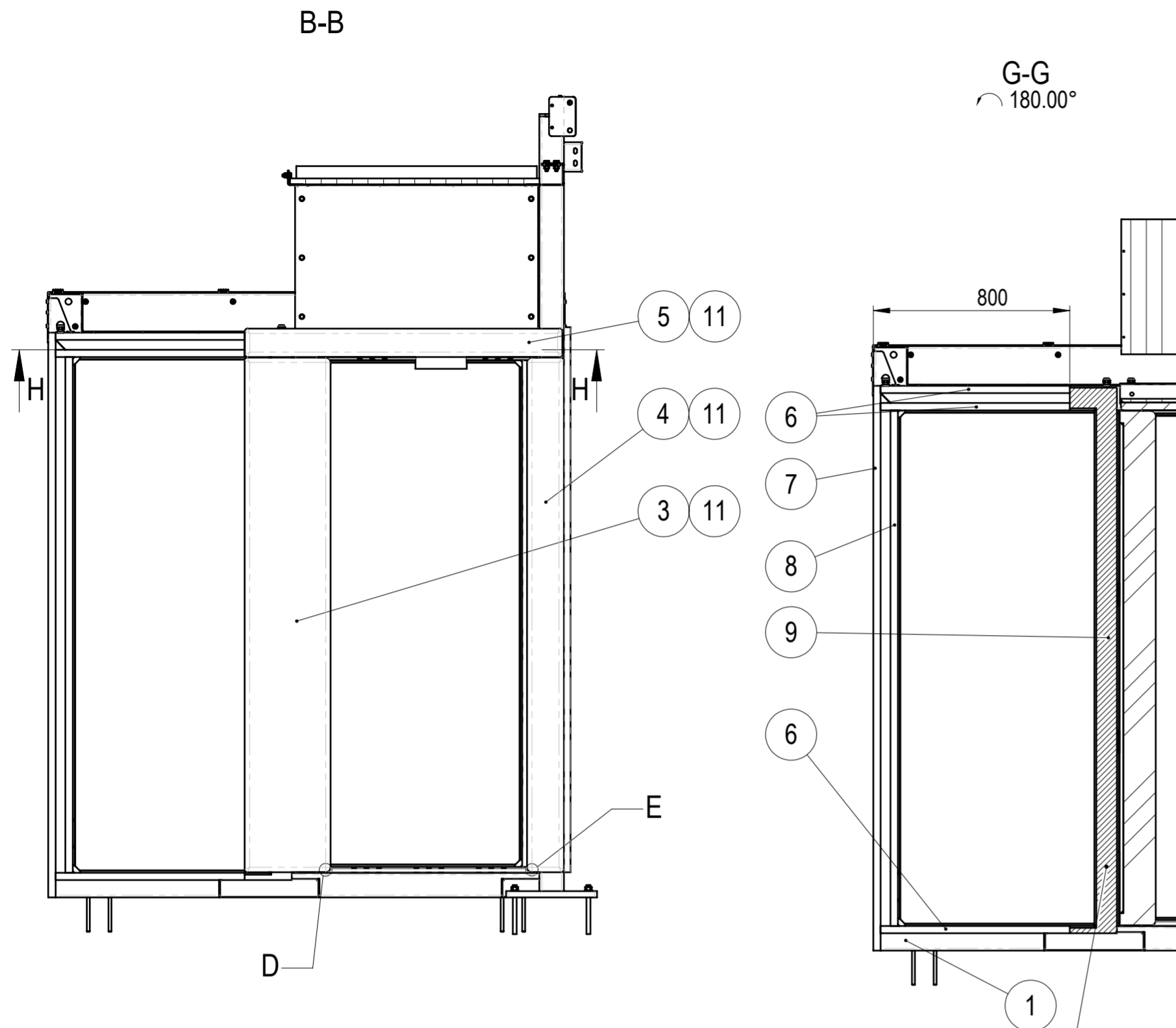
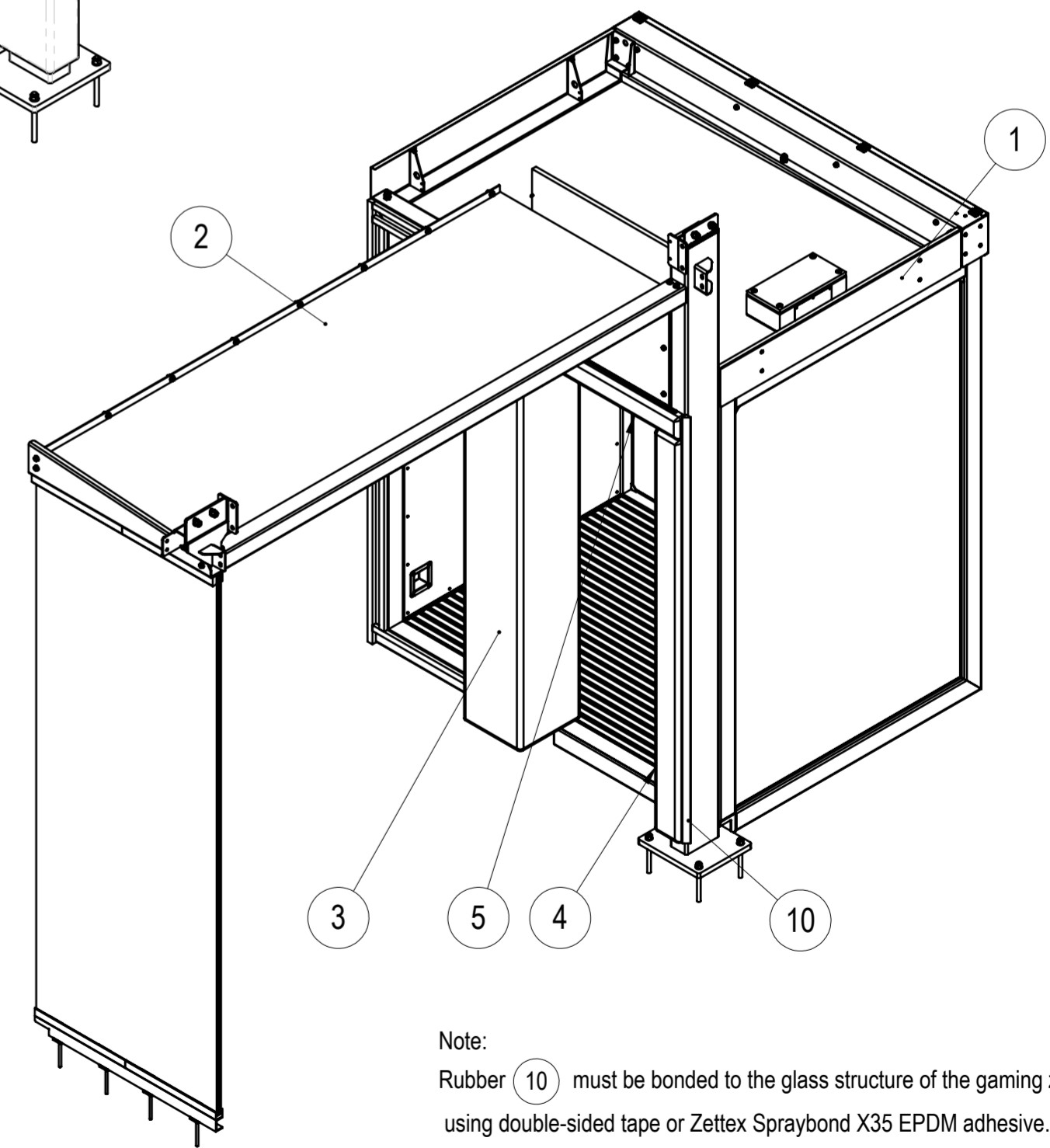
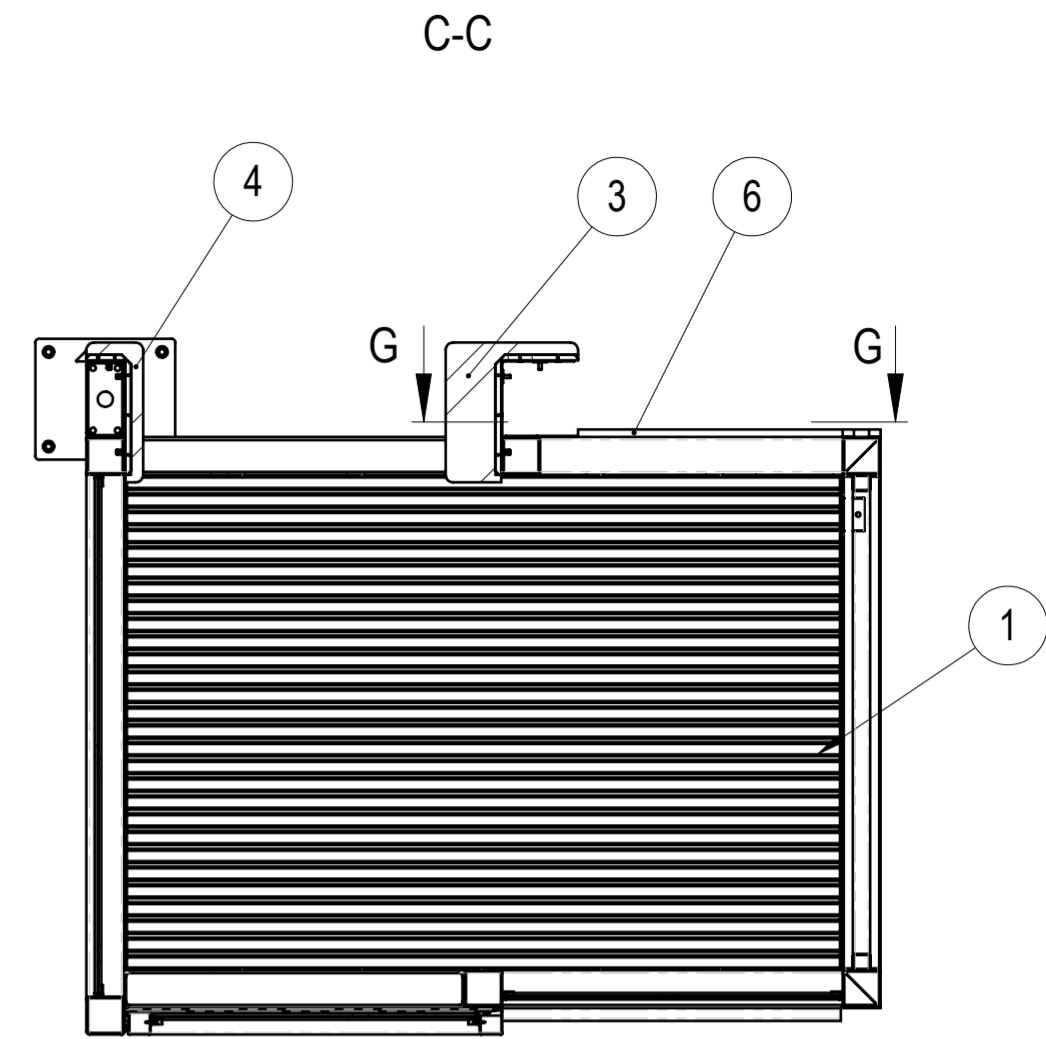
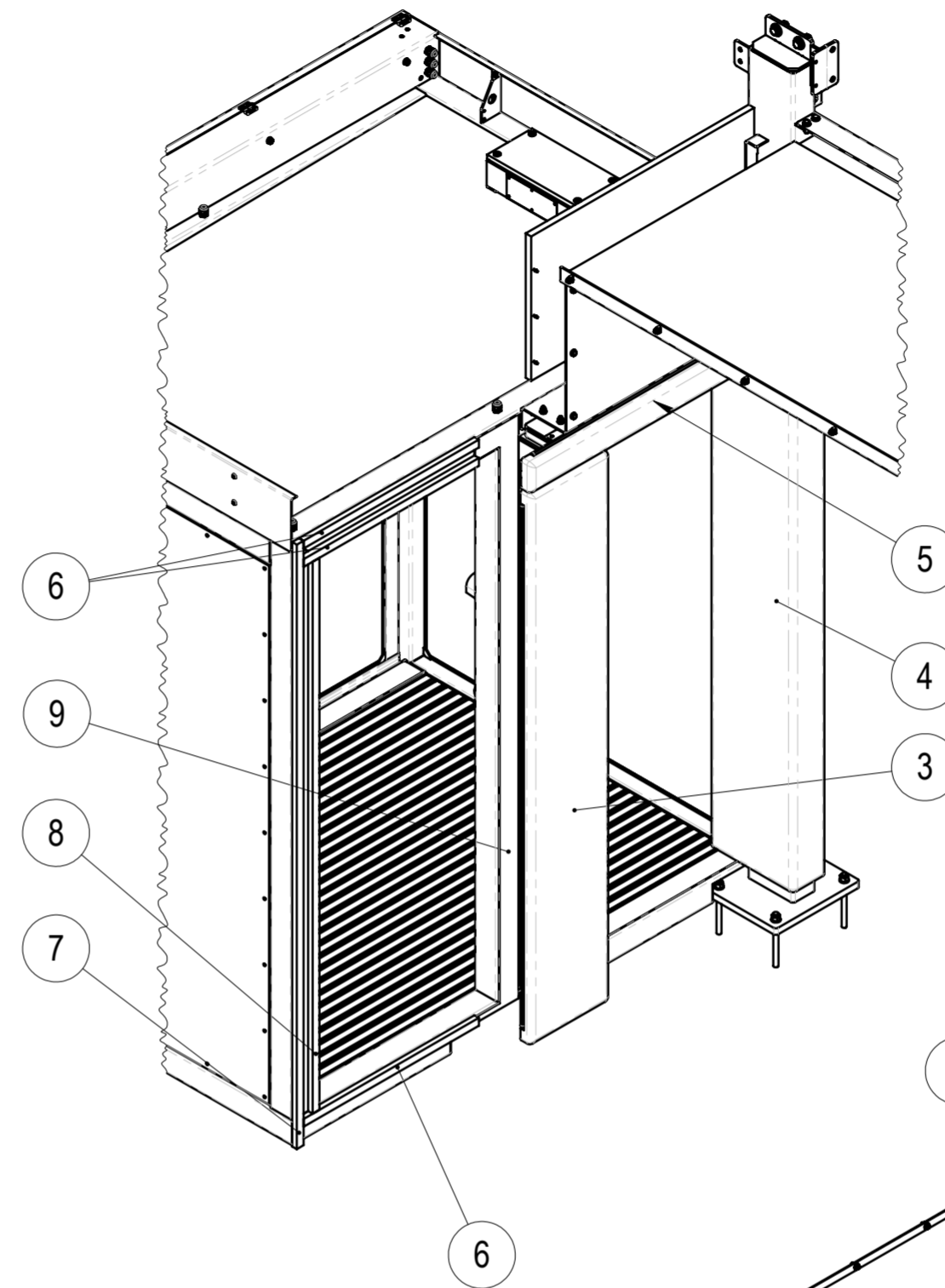


NO.	PART NO	DESCRIPTION	MATERIAL	PROCESSING	REVISION	WEIGHT	QTY
1	105-1100-00	Entrance chamber Right	-	ASY		896.61	1
2	105-11200-00	Wall structure Right	-	ASY		433.61	1
3	105-11310-00	Safety padding 1 assembly	-	OTH		29.84	1
4	105-11320-00	Safety padding 2 assembly	-	OTH		17.95	1
5	105-11330-00	Safety padding 3 assembly	-	ASY		5.68	1
6	Fixxprofile_588.2030	EP588, black, self-adhesive, L=770mm	-	COTS		0.60	3
7	Fixxprofile_588.2030	EP588, black, self-adhesive, L=2300mm	-	COTS		1.78	1
8	Fixxprofile_588.2030	EP588, black, self-adhesive, L=2100mm	-	COTS		1.63	1
9	Wurth KD bond 1.0l (gray)	Single component polyurethane	-	COTS		1.43	1
10	fixxProfile 580.5472 L-2220mm	Foam rubber profile	-	COTS		0.12	1
11	ISO7380-2 M8x25	Hex socket button head screw TX	EZn-10.9	COTS		0.01	16

<b>WEMPS</b> ENGINEERING SERVICES		MATERIAL	WEIGHT	DEBURR AND BREAK SHARP EDGES	REVISION	DATE
		-	1390.662 Kg	DO NOT SCALE DRAWING		12.05.2026
		SURFACE PROTECTION	MACHINING	THERMAL CUTTING	WELDING	SCALE
		-	ISO 2768 mK	ISO 9013 441	ISO 13920 BF	1:20
NAME	SIGNATURE	PART NO.		105-11000-00		
Designed by	A. Menkins	DESCRIPTION		Entrance zone Right		
Drawn by	D. Dislers					
Technical ref						SHEET 1/2

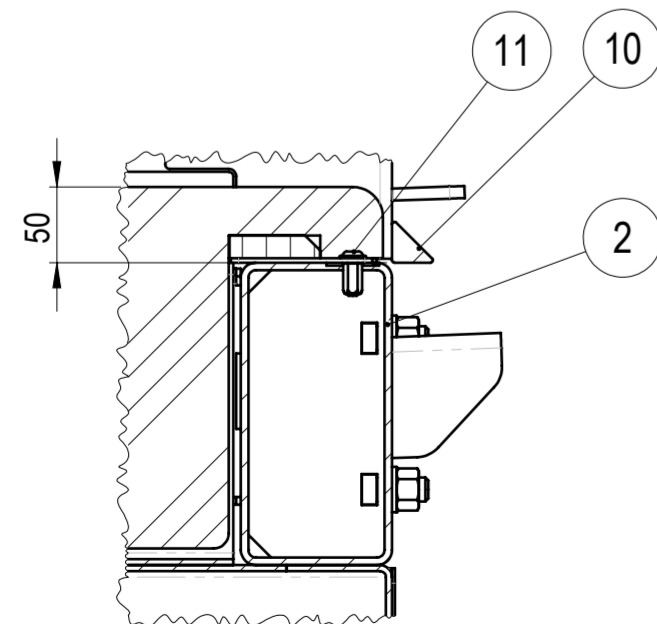


Note: apply silicone sealant (9) to interface surface with left turning chanel 105-05000-00

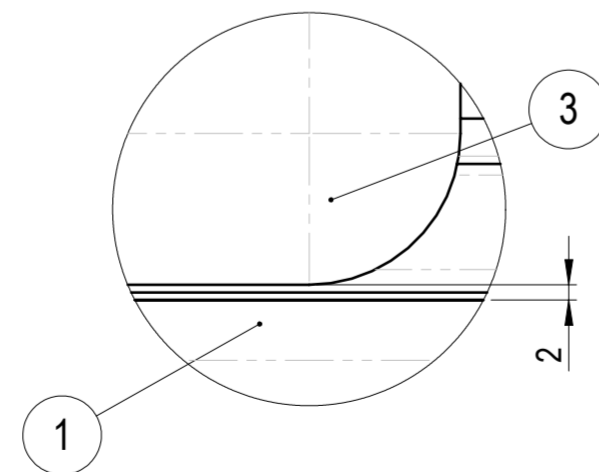


Note:  
Rubber (10) must be bonded to the glass structure of the gaming zone using double-sided tape or Zettex Spraybond X35 EPDM adhesive.

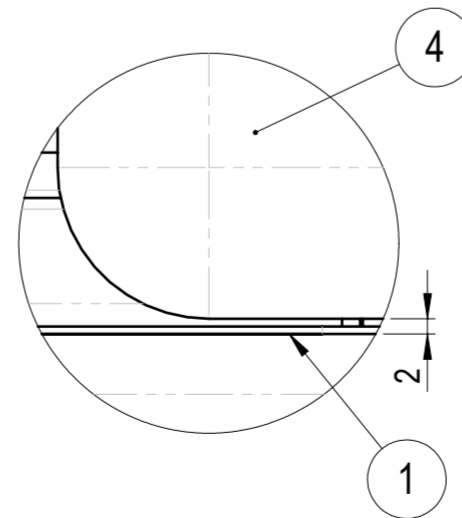
**H-H**  
SCALE: 1 : 5



**D**  
SCALE: 1 : 1



**E**  
SCALE: 1 : 1



<b>WEMPS</b> ENGINEERING SERVICES		MATERIAL	WEIGHT	DEBURR AND BREAK SHARP EDGES	REVISION	DATE
		-	1390.662 Kg	DO NOT SCALE DRAWING		12.05.2026
		SURFACE PROTECTION	MACHINING	THERMAL CUTTING	WELDING	SCALE
		-	ISO 2768 mK	ISO 9013 441	ISO 13920 BF	1:20
		NAME	SIGNATURE	PART NO.	FORMAT	
Designed by A. Menkins		105-11000-00			A2	
Drawn by D. Dislers		DESCRIPTION				SHEET 2/2
Technical ref.		Entrance zone Right				